

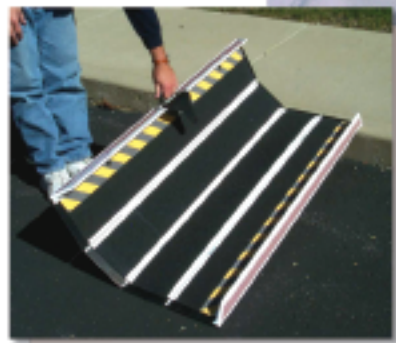
The DecPac Portable Ramp

DecPac Fiberglass Ramps

Wherever your entry problem, front porch, door threshold, curb or minivan, **DecPac** folding ramps are a light-weight solution. No assembly needed, ready to use right out of the box, simply unfold. Great for wheelchairs, walkers, strollers or anyone with limited mobility. No permanent assembly or installation, quick to setup or remove. Perfect for renters or travelers.

Features

DecPac ramps are lightweight and quiet, will silently ride in the back of your vehicle. All sizes of ramps have a built-in handle for carrying. The ends of the ramp have a ribbed grip-edge so they stay in place. Accordion-style fold makes the ramps easy to fold and compact so that they slide under a minivan seat or stand in a closet.



Components

Constructed of fiberglass-laminate with a rigid foam core, **DecPac** ramps are weather resistant. The deck has non-slip surface and bright safety tape to mark the edge. Personal size ramps have 3 panels. Longer MP (multi purpose) ramps have 4 panels. MP ramps also are available with an Edge Barrier, a 2 3/4" tall side panel to eliminate rolling off the edge. **DecPac** Ramps have a maximum load capacity of 660 lbs.

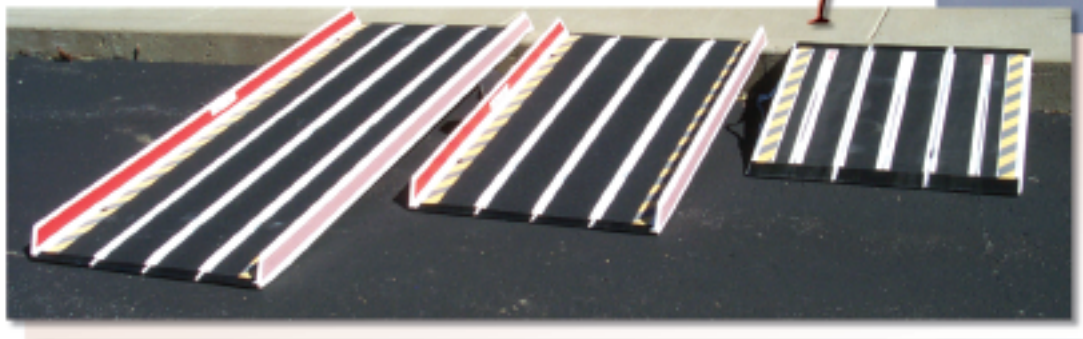
CLARKE HEALTH CARE PRODUCTS, INC.

1003 International Drive • Oakdale, PA 15071

Phone (888) 347-4537 • Fax (724) 695-2922 • www.clarkehealthcare.com



The DecPac Portable Ramp



SPECIFICATIONS	Length	Width	Weight	Suggested Rise
Personal Mini	2' 4"	29"	8.5 lbs	Up to 7"
Personal	2' 10"	33"	13 lbs	Up to 9"
MP44	4' 4"	29.5"	22 lbs	Up to 13"
MP55	5' 5"	29.5"	26.5 lbs	Up to 16"
MP66	6' 6"	29.5"	31 lbs	Up to 20"
MPEB44	4' 4"	32"	26.5 lbs	Up to 13"
MPEB55	5' 5"	32"	31 lbs	Up to 16"
MPEB66	6' 6"	32"	37.5 lbs	Up to 20"

Specifications

To determine ramp length, measure the rise, the distance from the top step to ground. Note, the longer the ramp, the less grade to overcome.

Warranty

DecPac ramps have a 1 year limited warranty against manufacturer defects.



CLARKE HEALTH CARE PRODUCTS, INC.

1003 International Drive • Oakdale, PA 15071

Phone (888) 347-4537 • Fax (724) 695-2922 • www.clarkehealthcare.com