
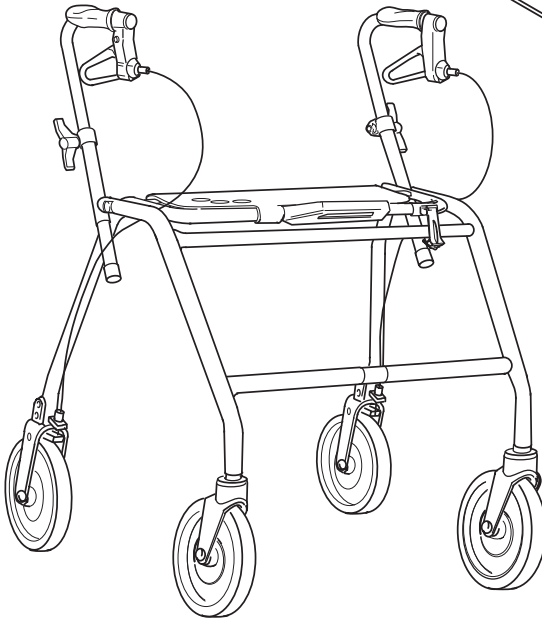




# DOLomite LEGACY VALOR

 Do not use as a wheelchair or transport chair.



## OPERATING INSTRUCTIONS

Study the operating instructions carefully before use.  
The walker is suitable for use both indoors and outdoors.



## SAFETY

- Do not use as a wheelchair or transport chair.
- Do not under any circumstances stand on the walker.
- Use seat for stationary seating only. Never sit and push with your feet.
- Do not go up or down stairs or use on escalator.
- Both brakes must be in the parking position when the walker is used as a seat.
- The walker must be fully unfolded when used as walking support. N.B. The walker may only be used as a walking support.
- Be extra careful when using the walker on a sloping surface.
- Be extra careful when carrying heavy loads in the basket. Loads may only be carried in the basket or on the tray. Max load on tray 11 lbs. (5 kg).

## ACCESSORIES

- A) Mounting of basket.
- B) Secure the tray using the plastic plugs.
- C) Curb climber

## FOLDING SEAT

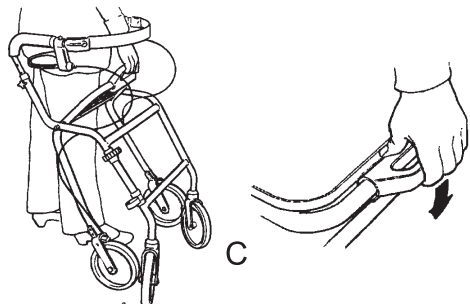
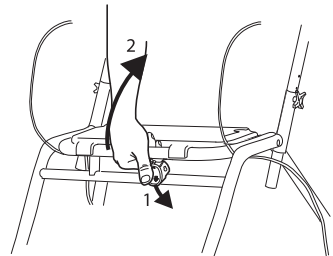
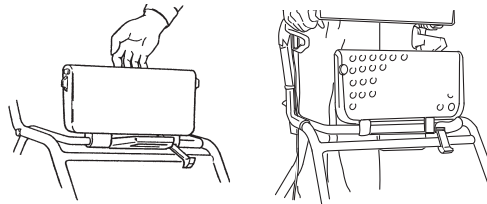
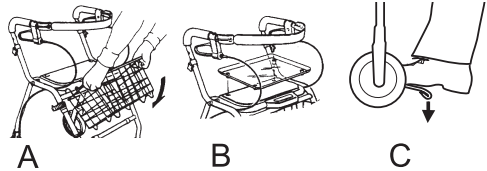
The seat can be folded up to provide a larger walking space, and in order to increase accessibility.

## FOLDING

1. Press down the safety catch.
2. Pull the seating tube upwards.

## OPERATING POSITION

To reset to walking position, press firmly downwards on the seat until a clicking sound is heard.



## BRAKES

Apply the brakes by pulling **both** brake-handles upwards.

## PARKING BRAKE

Press down carefully for parking brake. A clear sound is heard when the brake is placed in correct position. N.b. Always place both brakes in parking position. Pull upwards to loosen the brake.

**Both** brakes must be in the parking position when the walker is used as a seat.

## ADJUSTMENT OF BRAKE EFFECT

For desirable braking strength, adjust the brake wire.

Suitable tools 1x8 mm and 1x10 mm spanner (not included).

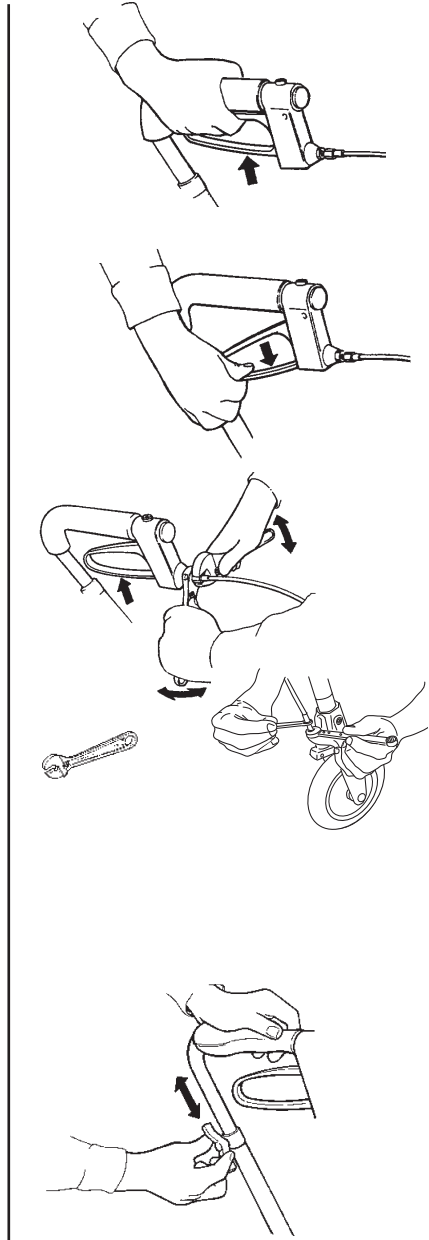
## HANDLEBARS

To adjust the handle to a suitable height, stand behind the walker with shoulders level. The handles should be at the same height as the user's wrist. A therapist may suggest different handle heights to accommodate the special needs of a user.

### **DOLOMITE LEGACY VALOR**

#### **For stepless adjustment:**

Loosen the wing nut, adjust the handle to suitable height and tighten the wing nut properly.



## MAINTENANCE – SAFETY

To ensure good performance and safety you should regularly check that the following is carried out:

- Clean the rollator with solvent-free household cleaner. Keep the wheels clean.
- **Ensure that screws and adjustments** are properly tightened.
- **Immediately contact the nearest dealer if a fault should appear. Never use a defective walker.** Do not attempt repairs yourself!

**N.B. Your walker should only be used as a walking aid! User's max. weight:**

**DOLOMITE LEGACY VALOR 300 lbs. (136 kg)**

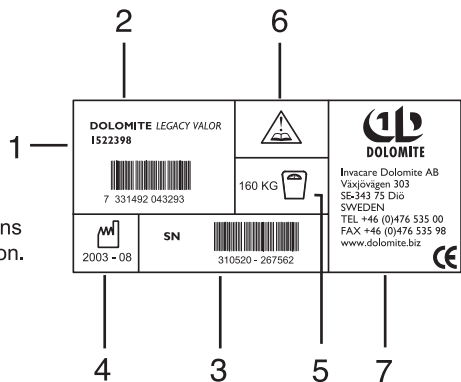
**DOLOMITE** will **not** accept responsibility for adaptations, faulty repairs etc that are outside their control.

### INSTRUCTIONS FOR DESTRUCTION OF PRODUCT AND PACKAGING:

When the product can no longer be used, it and its accessories, together with packaging material, should be sorted properly. The individual parts can be separated and handled according to the materials description.

The label on the **DOLOMITE LEGACY VALOR** provides all important technical information.

- 1: Article number
- 2: Product name
- 3: Serial number
- 4: Date of manufacture
- 5: Maximum user weight
- 6: NB: read the operating instructions
- 7: Manufacturer's contact information.



INVACARE DOLOMITE AB, Växjövägen 303, SE-343 75 Diö, SWEDEN  
TEL +46 (0)476 535 00, FAX +46(0)476 535 98  
[www.dolomite.biz](http://www.dolomite.biz)