

Technical manual Dukki

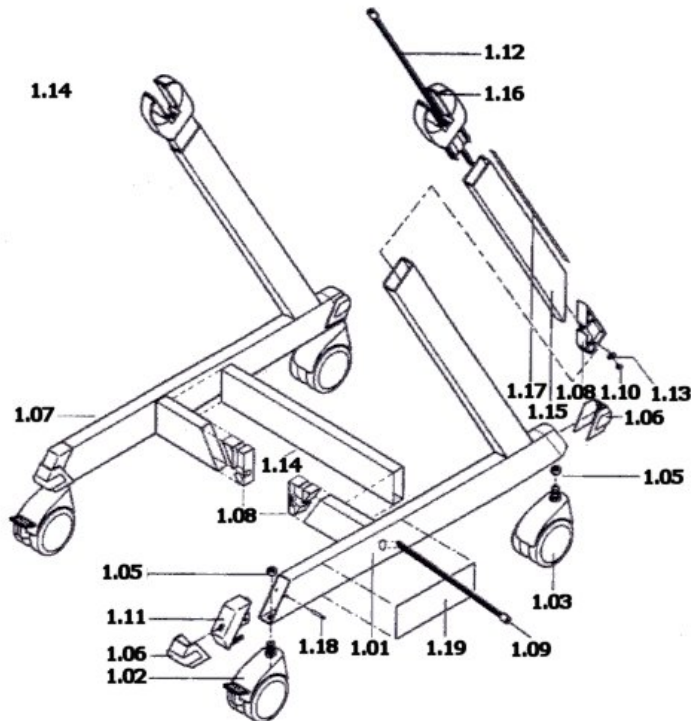


November 2003
Technical manual Dukki

This manual is a supplement to the normal user manual

Replacing defect spare-parts

1) Underframe



1.1) Covercap (1.06)

- Remove old covercap (with screwdriver)
- Place new cap, press firmly till click is heard, (1.11)

1.2) Frontwheel (1.02) and backwheel (1.03)

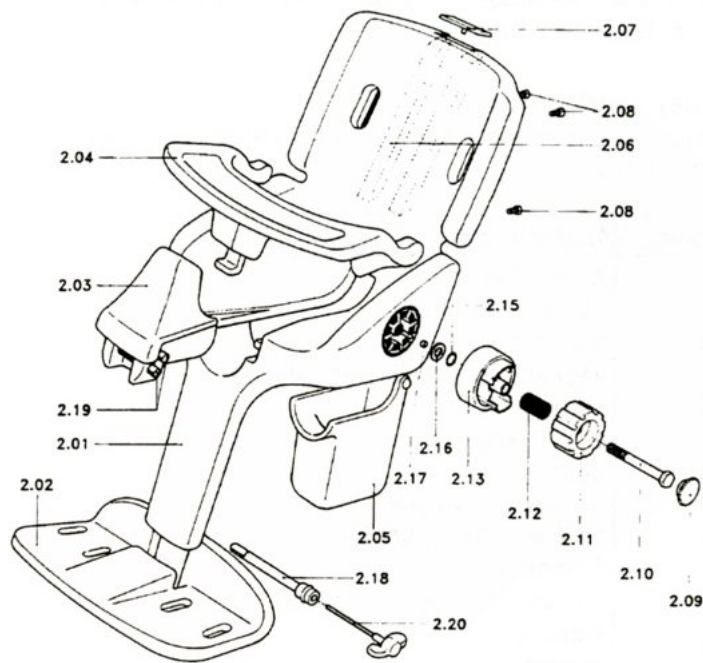
- Remove cover-cap (1.06)
- Turn wheel loose a few turns
- Remove framecap (1.11) from the frame
- Nut 1.05 must be blocked by a screwdriver
- Wheel can be removed now
- Mount new wheel, threaded end must be glued with treadlocker (Permabond A113)
- The rest of the parts of the parts can be placed in reverse sequence.

1.3) Framecap (1.11)

- Remove covercap (1.06)
- Turn wheel loose a few turns
- Remove framecap (1.11) from the frame
- Place new cap in reverse sequence
- Pay attention if used wheel will be placed, all the old glue must be removed first and new glue must be used

For removing other parts see the user manual (chapter 3)

2) Seat shell with footrest



2.1) Headrest receipt tubes (2.06)

- First remove screws 2.08 and remove cap (2.07).
- The receipt tubes can now be removed with a special tool (available by Huka)
- New tube can be ticked in shell with rubber hammer (the tube must have the same level as the edge of the seat-shell)
- Fixate with screws 2.08.

2.2.) Fixation-block (2.13), the spring (2.12) turning knob for seatshell fixation (2.11)

- Remove cap (2.09) with screwdriver
- Bolt (2.10) can be turned loose with spanner
- Defect part can be replaced now
- Glue bolt with treadlocker and turn it till it's fixed cap can be ticked on its place now.

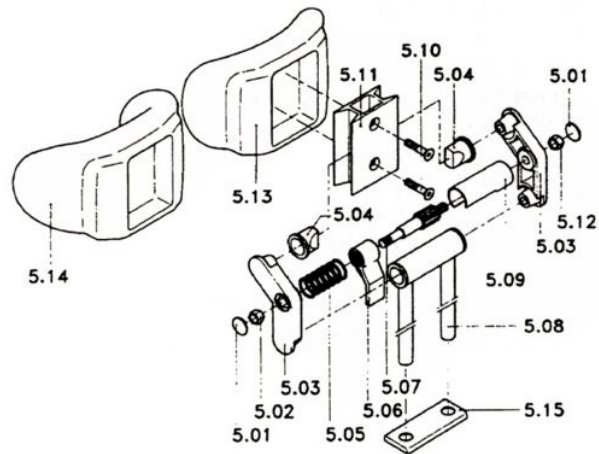


2.3 Lock for hygienic bowl

- First remove receipt tubes for headrest see 2.1
- With special socket spanner (available by Huka) nut inside shell must be fixed
- the screw in the red lock-plate must be turned loose now
- Replace the new red lock-plate in reverse sequence.

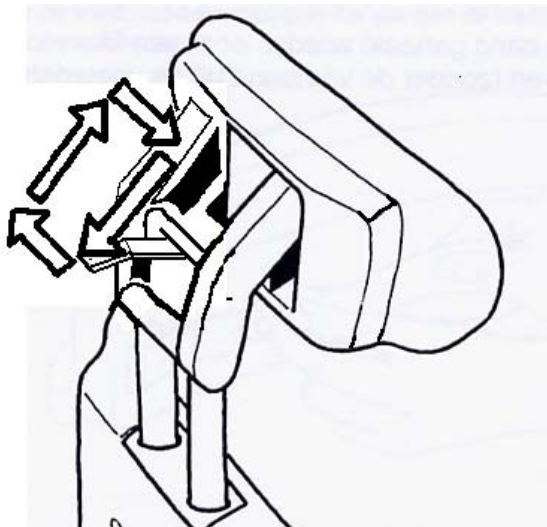
For other adjustments see chapter 4.1 from the user manual.
For replacing and adjusting footrest see chapter 4.2 from the user manual.

3. Headrest



3.1 Foampart (5.14)

- Loosen bolts 5.10 completely
- The defect foampart can be replaced now.
- Fasten bolts 5.10 firmly



3.2 Hendle (5.06)

- First remove foampart (see 3.1)
- Press side-parts to eachother hendle (5.06) loose hendle in sequence (picture above)
- Thread end will be loosened from the side-parts now.
- Hendle axle can be replaced now
- Mount parts together in reverse sequence

3.2 Spring (5.05)

- Remove cup (5.01) and loose nut (5.02)
- Remove side-part (5.03)
- Remove spring (5.05) from axle (5.07) and replace spring
- Mount parts in reverse sequence

3.3. Axle (metal part)(5.07)

- Remove cups (5.01) on both sides and loosen nuts (5.02 and 5.12).
- Remove side-parts (5.03)
- Remove spring (5.05) and hendle (5.06)
- Remove tube (5.09) from the other side
- New hendle can be mounted now
- Mount parts in reverse sequence.

3.4 Tube (5.09)

- Remove cup (5.01) at the side from the tube(5.09) dop (5.01) and loose nut (5.12)
- Remove side-part (5.03)
- Tube can be replaced now
- Mount parts in reverse sequence.